

A photograph of a coastal forest. Large, gnarled tree trunks are visible, with thick Spanish moss hanging from the branches. The ground is covered with green plants, possibly sea purslane. The lighting is dappled, suggesting a dense canopy.

Balancing Civilization and Wildness in your Coastal Landscape

Coastal WildScapes

Ashantilly Center
Darien, Georgia

13 September 2023

Thomas Angell, ASLA



Fire Managed Long Leaf Pine Ecotype in Francis Marion Forest





Top 10 Environmental Issues

1. Climate Change
2. Energy
3. Water
4. Biodiversity & Land Use
5. Chemicals, Toxins, Heavy Metals
6. Air Pollution
7. Waste management
8. Ozone Layer Depletion
9. Oceans & Fisheries
10. Deforestation

Biodiversity & Land Use: Threatened Regional Landscapes

January 30, 2012, 7:29 am [4 Comments](#)

A Plea for Southern Treasures



By [JOANNA M. FOSTER](#) Ron Lowery

A planned four-lane highway between Chattanooga, Tenn., and Asheville, N.C., threatens the Chilhowee Mountain area in the Cherokee National Forest, an environmental group says.

The Southern Environmental Law Center, a Virginia-based nonprofit legal advocacy group, has released its [2012 list of the Top 10 endangered places in the Southeast, environmentally speaking](#). While the list changes from year to year, certain places like the Chesapeake Bay remain a top concern — and issues like pollution from coal-fired power plants and the protection of public lands and old-growth forests are recurring themes. While the list only considers six states, the issues raised by each site resonate nationally, and even globally.

Climate Change: Rising Ocean Levels

75¢

MONDAY, AUGUST 6, 2012



SAVANNAHNOW.COM



LIGHT OF THE COAST

Tybee tackles rising seas

Public workshops to prepare, determine vulnerabilities this week

BY ERIC CURL

912-652-0312

eric.curl@savannahnow.com

Sea levels near Tybee Island have been on the rise for decades, and city officials are now considering ways to keep the city afloat.

In an effort to stay above water, Tybee officials will host the first of a series of public workshops today and

Tuesday as part of a two-year sea level adaptation-planning project.

“The gist of it is long-term planning,” said Mayor Jason Buelterman. “We’re getting the data so we can make wise decisions on where to place infrastructure.”

The project is a joint effort between the city government, the University of Georgia Carl Vinson Institute of Government, Georgia

Sea Grant, the Georgia Department of Natural Resources and UGA Marine Extension Service, with funding from the National Oceanic and Atmospheric Administration.

University of Georgia and Georgia Sea Grant officials will work with city leaders and residents to identify community assets that are

SEE TYBEE, PAGE 4A

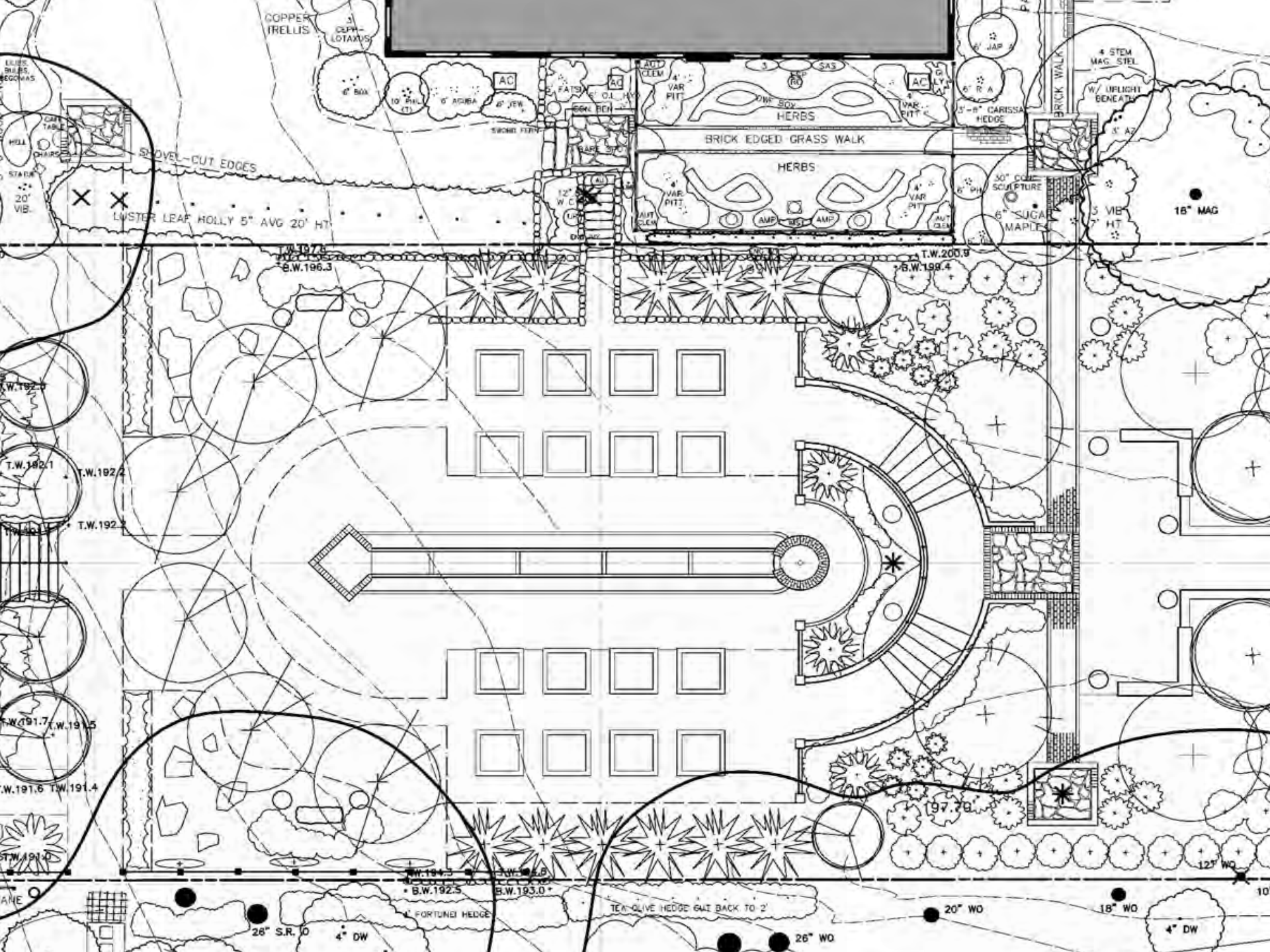
IF YOU GO

The Tybee Island City Council will meet at 3 p.m. today at city hall to decide which island assets and infrastructure to include in the study. The public will be able to provide input during a comment period.

On Tuesday, city officials will meet at city hall at 9:30 a.m. to discuss the technical aspects of the project and share information about the city’s facilities.

“Tybee might need to get a consultant from the Netherlands. Imagine Tybee with dykes and windmills”





Classic Garden Design





Landscaping with Native Plants

- Less water, fewer pesticides, already adapted to the region, regional pride and patriotism, attract birds and butterflies.
- Decrease fragmentation and loss of habitat. Move away from monocultures to species diversity.
- Decrease lawn size, save money, become models of sound ecology.











Natural but Neat: 25' Minimum Buffer





PALMETTO BLUFF
 Venable Associates, LLC • Waltham, South Carolina
 Environmental Design • Landscape Architecture • Site Planning

- (A) Woodland Area
- (B) Neighborhood Trail
- (C) Cart Path
- (D) Lane

MASTER LANDSCAPE PLAN

WEST VILLAGE
 PALMETTO BLUFF • BLUFFTON, SC
 0 40 80 160 feet
 JUN 2015

West Village homes & streetscape































Rain Gardens

Shallow depressional areas filled with engineered soil media and planted with trees, shrubs and herbaceous material

One of the most effective storm water management practices for:

- Reduce run-off rates and volumes
- Reduce pollutants
- Increase infiltration

- Provide retention of small storm volumes such as 2-10 year storms
- Provide wildlife habitat and beauty
- Fairly easy and inexpensive to implement on a residential scale









NATIVE PLANT
 DEMONSTRATION GARDEN
 SPRING ISLAND, SC







Bog and Swale







Coastal Landscapes are Dynamic Systems





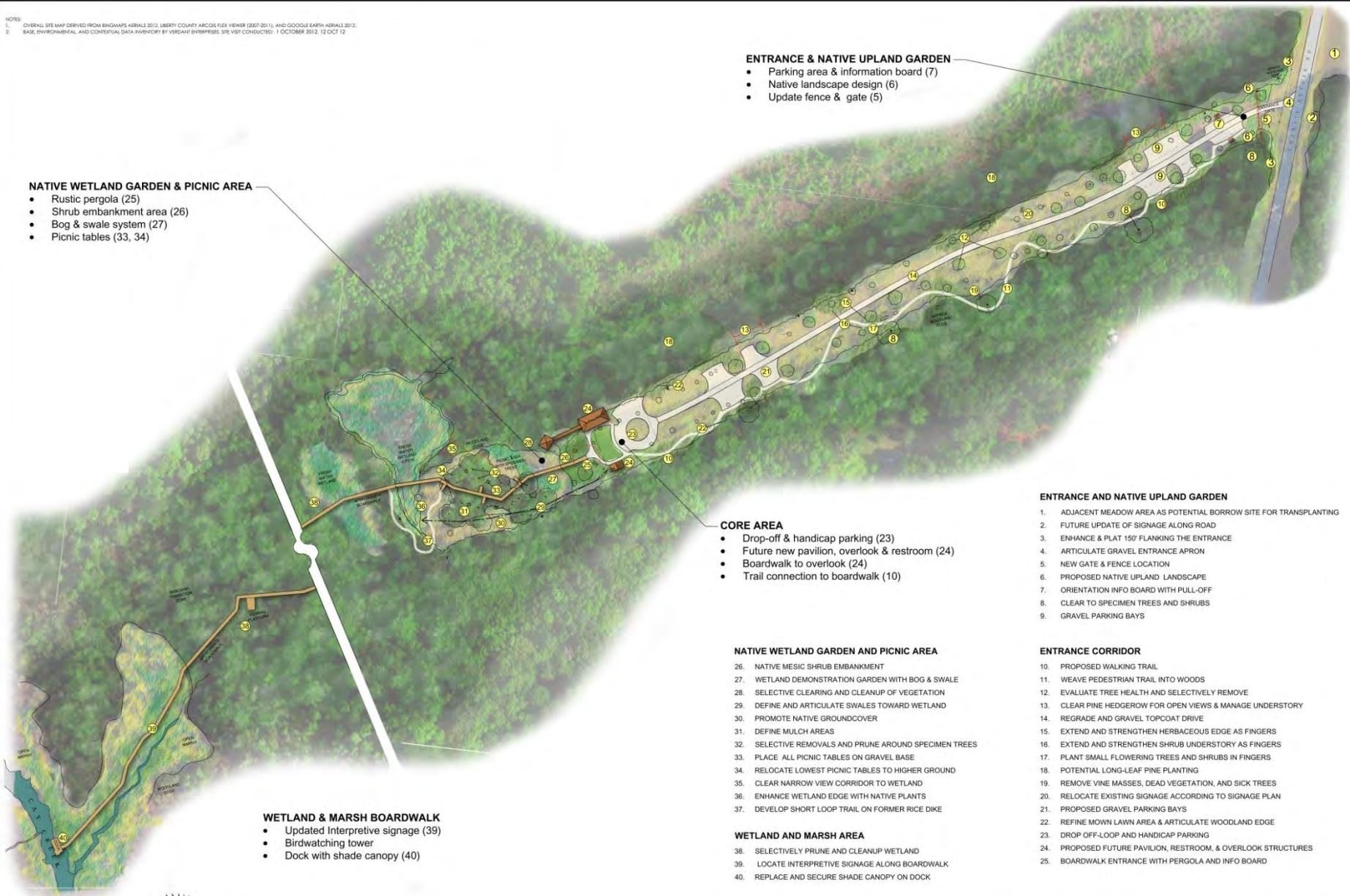
Harris Neck National Wildlife Refuge





NECK
Refuge
Station

NOTES:
 1. OVERALL SITE MAP DERIVED FROM BINGMAPS AERIALS 2012, LIBERTY COUNTY AERIALS FLY VIEWER (2007-2011), AND GOOGLE EARTH AERIALS 2012.
 2. BASE ENVIRONMENTAL AND CONTEXTUAL DATA PROVIDED BY VERDANT ENTERPRISES. SITE VISIT CONDUCTED: 1 OCTOBER 2012, 12 OCT 12



ENTRANCE & NATIVE UPLAND GARDEN

- Parking area & information board (7)
- Native landscape design (6)
- Update fence & gate (5)

NATIVE WETLAND GARDEN & PICNIC AREA

- Rustic pergola (25)
- Shrub embankment area (26)
- Bog & swale system (27)
- Picnic tables (33, 34)

CORE AREA

- Drop-off & handicap parking (23)
- Future new pavilion, overlook & restroom (24)
- Boardwalk to overlook (24)
- Trail connection to boardwalk (10)

NATIVE WETLAND GARDEN AND PICNIC AREA

26. NATIVE MESIC SHRUB EMBANKMENT
27. WETLAND DEMONSTRATION GARDEN WITH BOG & SWALE
28. SELECTIVE CLEARING AND CLEANUP OF VEGETATION
29. DEFINE AND ARTICULATE SWALES TOWARD WETLAND
30. PROMOTE NATIVE GROUND COVER
31. DEFINE MULCH AREAS
32. SELECTIVE REMOVALS AND PRUNE AROUND SPECIMEN TREES
33. PLACE ALL PICNIC TABLES ON GRAVEL BASE
34. RELOCATE LOWEST PICNIC TABLES TO HIGHER GROUND
35. CLEAR NARROW VIEW CORRIDOR TO WETLAND
36. ENHANCE WETLAND EDGE WITH NATIVE PLANTS
37. DEVELOP SHORT LOOP TRAIL ON FORMER RICE DIKE

WETLAND AND MARSH AREA

38. SELECTIVELY PRUNE AND CLEANUP WETLAND
39. LOCATE INTERPRETIVE SIGNAGE ALONG BOARDWALK
40. REPLACE AND SECURE SHADE CANOPY ON DOCK

WETLAND & MARSH BOARDWALK

- Updated interpretive signage (39)
- Birdwatching tower
- Dock with shade canopy (40)

ENTRANCE AND NATIVE UPLAND GARDEN

1. ADJACENT MEADOW AREA AS POTENTIAL BORROW SITE FOR TRANSPLANTING
2. FUTURE UPDATE OF SIGNAGE ALONG ROAD
3. ENHANCE & PLANT 15' FLANKING THE ENTRANCE
4. ARTICULATE GRAVEL ENTRANCE APRON
5. NEW GATE & FENCE LOCATION
6. PROPOSED NATIVE UPLAND LANDSCAPE
7. ORIENTATION INFO BOARD WITH PULL-OFF
8. CLEAR TO SPECIMEN TREES AND SHRUBS
9. GRAVEL PARKING BAYS

ENTRANCE CORRIDOR



10. PROPOSED WALKING TRAIL
11. WEAVE PEDESTRIAN TRAIL INTO WOODS
12. EVALUATE TREE HEALTH AND SELECTIVELY REMOVE
13. CLEAR PINE HEDGEROW FOR OPEN VIEWS & MANAGE UNDERSTORY
14. REGRADE AND GRAVEL TOPCOAT DRIVE
15. EXTEND AND STRENGTHEN HERBACEOUS EDGE AS FINGERS
16. EXTEND AND STRENGTHEN SHRUB UNDERSTORY AS FINGERS
17. PLANT SMALL FLOWERING TREES AND SHRUBS IN FINGERS
18. POTENTIAL LONG-LEAF PINE PLANTING
19. REMOVE VINE MASSES, DEAD VEGETATION, AND SICK TREES
20. RELOCATE EXISTING SIGNAGE ACCORDING TO SIGNAGE PLAN
21. PROPOSED GRAVEL PARKING BAYS
22. REFINE MOWN LAWN AREA & ARTICULATE WOODLAND EDGE
23. DROP OFF-LOOP AND HANDICAP PARKING
24. PROPOSED FUTURE PAVILION, RESTROOM, & OVERLOOK STRUCTURES
25. BOARDWALK ENTRANCE WITH PERGOLA AND INFO BOARD

BOARDWALK AND DOCK ACTIVITY RULES PROHIBIT

- Use Of Boardwalk When Park Is Closed
- Loud Noises
- Littering And All Glass Containers
- Unleashed Dogs At Any Time
- Unauthorized Scooters
- Bikes, Skateboards, Roller-Skates Or Rollerblades
- Music (Use Headphones)
- Alcohol
- Feeding Birds Or Animals
- Removal Of Any Plants, Flowers, Leaves And Logs
- Getting Off The Boardwalk After Entry Into Wetlands
- Fires Unless Permitted
- Fish Cleaning
- Firearms

PLEASE HELP KEEP OUR ENVIRONMENT CLEAN AND
FREE OF LITTER... PLEASE USE RECEPTACLE...
Violations May Result In A Citation And/Or Restrictions In Use.
City of Midway Police Dept.

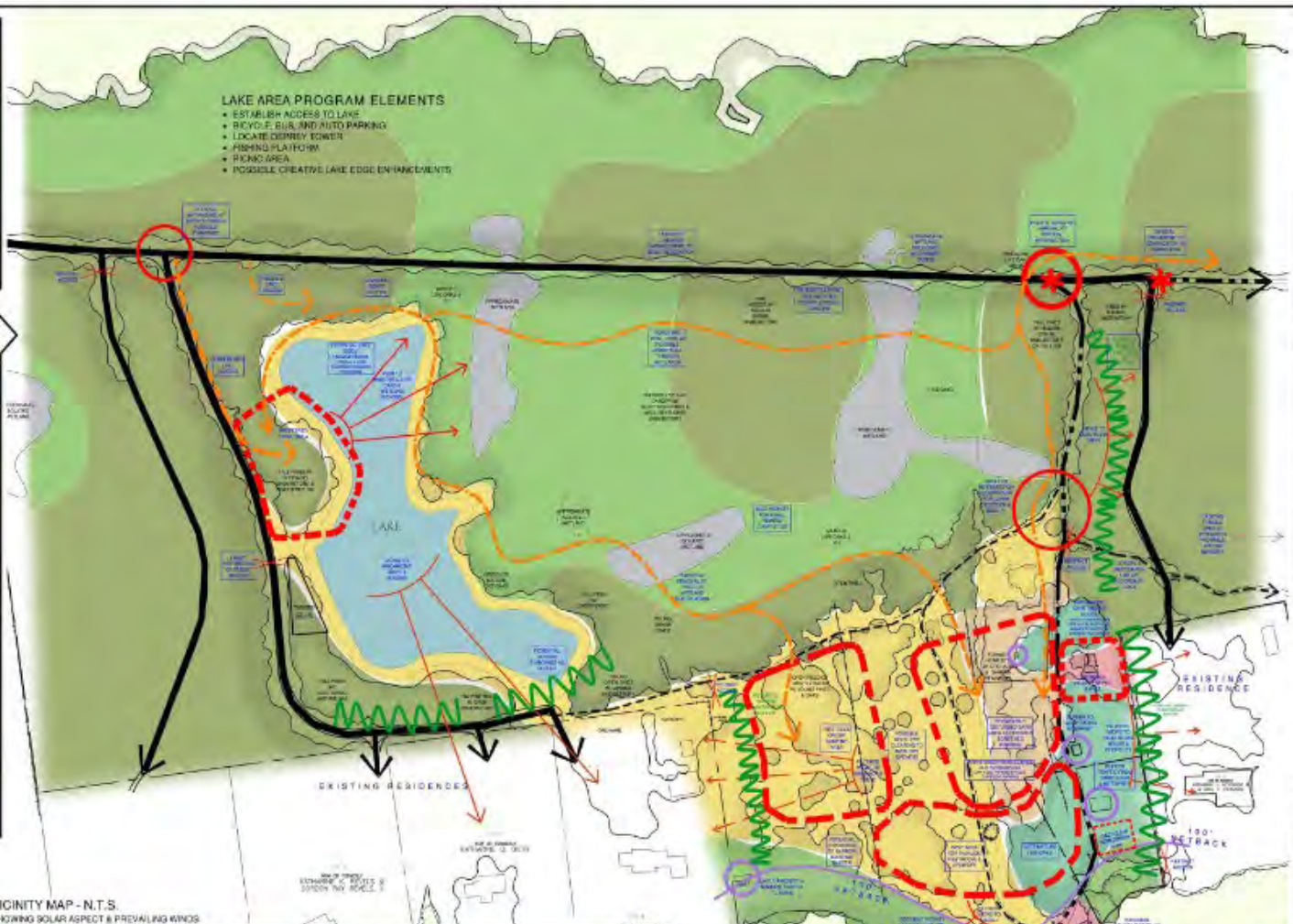
This project funded in part by the
Coastal Management Program
and the
National Oceanic and Atmospheric Administration
Office of Ocean
and Coastal Resource Management
through the
Coastal Zone Management Act of 1972







NOTE:
 1. SUPPLEMENTAL RECORD DRAWINGS WILL BE PROVIDED TO THE CLIENT BY THE DESIGNER.
 2. THIS PLAN IS A PRELIMINARY DESIGN AND SHOULD NOT BE USED FOR CONSTRUCTION.
 3. ADDITIONAL INFORMATION IS AVAILABLE UPON REQUEST BY THE CLIENT.
 4. THIS PLAN IS THE PROPERTY OF THE DESIGNER AND IS NOT TO BE REPRODUCED OR COPIED WITHOUT THE WRITTEN PERMISSION OF THE DESIGNER.



SITE DESCRIPTION
 CANNONS POINT SOUTH END

This approximately 60 acre tract consists of a combined paved drive from Lawrence Road for the St. Simons Land Trust Property and five private residences.

An improved dirt road leads generally southeast of the paved entrance road, essentially forming a loop. The loop leads to the discontinued Taylor's fish camp through a large open field once used for cattle grazing and boat trailer parking and storage. The northern piece transects a majestic live oak grove with several roadside structures. Both roads terminate at Lawrence Creek, where a severely deteriorated road and docks remain.

There are now two contemporary stambled buildings located in the Taylor's fish camp area: a concrete block building adjacent to the boat and the former caretaker's residence. A buried concrete cattle dip vat and associated shed foundations also are found in the area. Underground electrical and telephone lines are present on-site.

A semi-labry building, foundations, and scattered remnants of some historical structures exist within the general Taylor's fish camp area, as do extensive native American shell middens. Older historic and pre-historic structures likely exist in the Taylor's fish camp area.

The six-acre freshwater lake area lies between the adjacent Taylor's fish camp area to the north and Cedar Bank Road to the south. This private paved easement road branches off the main entrance road and leads to several of the private residences located generally around the lake, adjacent to the Cannon's Point property.

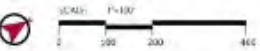
ROAD LEGEND

- PAVED ASPHALT
- UNIMPROVED FORD
- UNIMPROVED TRUCK ROAD
- POSSIBLE TRAIL, LOGS& CRACK

VEGETATION LEGEND

- WATER
- MARSH
- FRESHWATER WETLAND
- MARSHY LIVE OAK FOREST
- MARSHY PINE FOREST
- PINE WOODS
- OPEN FIELD OR PREVIOUSLY FRESHING
- SLEEDER OR PREVIOUSLY DISTURBED
- HUMAN USE

VICINITY MAP - N.T.S.
 SHOWING SOLAR ASPECT & PREVAILING WINDS













Purple Love Grass
Eragrostis spectabilis



Sweetgrass
Muhlenbergia capillaris



River Oats
Chasmanthium latifolium











Why You Should Grow Native Plants in Your Garden

Entomologist Doug Tallamy explains how doing so can help insects and birds

Emily Underwood, Knowable Magazine

September 7, 2023



Having native plants in a garden can create a good environment for caterpillars, which are hearty food for birds [Dario Sanches via Wikimedia Commons under CC By-SA 2.0](#)

NOTES
 1. SURVEY COURTESY OF DEVEN & WILKINSON, CREATED NOVEMBER 2016, RECEIVED 2022. SATELLITE IMAGE COURTESY OF GOOGLE EARTH.
 2. DESIGN/CONCEPT JUNE 2022
 3. BASE ENVIRONMENTAL AND CONTEXTUAL DATA INVENTORY BY VERDANT ENTERPRISES, SITE VISITS CONDUCTED: 22 JUNE 2022 & 8 AUG 2022



ENHANCED WETLAND GARDEN W/ 4 TREE GROVES

PILE WALL ENTRY POINTS

CLEARED VIEWS TO MARSH

PILE WALL ENTRY POINTS

WOOD LANDING

PROPOSED GAZEBO

WOOD FOOTBRIDGE

PROPOSED COMMUNITY CENTER

NATURE TRAIL

PILE WALL ENTRY POINTS

OPENED VIEWS TO BOG

PERGOLA

SWALE

PILE WALL CIRCLE W/ BENCH & SHELL SAND INFILL

NATIVE DEMONSTRATION GARDENS

FIRE PIT

WIRE GRID VINE TRELLIS

RAIN GARDEN

RESTORED OBSERVATION DECK

PROPOSED COLLECTOR WALK TO DOCK

PERGOLA

PILE WALL CIRCLE W/ BENCH & SHELL SAND INFILL

WOOD FOOTBRIDGE

SAPPELO VISITOR CENTER
 1766 LANDING ROAD SE • DARIEN, GA

Thank You!



VERDANT ENTERPRISES

ENVIRONMENTAL DESIGN • LANDSCAPE ARCHITECTURE • SITE PLANNING

- www.verdantenterprises.com
- [Facebook.com](https://www.facebook.com/verdantenterprises)
- [Houzz.com](https://www.houzz.com)

